

Fine Jewellery, Watches & Silver, 18th Apr, 2024 09:30

- 1 A natural saltwater pearl and diamond lavalier necklace, circa 1920s, featuring an egg-shaped pearl in engraved mount, cream coloured with rose overtones approximately measuring 10.3 x 8.4 mm, framed within a teardrop-shaped pendant surround with millgrain details, encrusted with rose-cut and single-cut diamonds throughout, suspending from a series of articulated diamond-links leading to a fine cable chain with spring-ring clasp, unmarked white metal testing as 18ct, pendant drop length 4.4 cm, overall 39.0 cm long, total weight of item 7.4 grams.



The item is subjected to a verbal report from GCS confirming this is a natural saltwater pearl. (Ref: 5784-2012) **£800-1,200**

- 2 A William IV mourning ring for Francis Basset, 1st Baron de Dunstanville, of wrap-around serpent form, scale details embellished with black enamel, diamond chippings as eyes, engraved with 'Lord De Dunstanville, Obit 5th Feb 1835 at 78' inside the shank, London hallmarked as 18ct yellow gold, 1835, size P, 7.7 grams. **£300-500**



- 3 A Victorian enamel and seed pearl brooch, the oval panel with textured work and blue enamel, applied with a round laurel motif suspending from the ribbon surmount, encrusted with split pearls and further framed within a scalloped border, later-added brooch fittings to the reverse, mount marked '9ct', 5.0 cm long, total weight of item 10.0 grams. **£600-800**



- 4 An Edwardian diamond brooch circa 1910, designed in a circular lattice design, with an applied garland motif with millegrain edges set with old cut diamonds and rose cut diamonds, with a total estimated diamond weight of 4.00ct, the brooch measuring 40 x 44mm. Total weight 18 grams **£700-1,000**



- 5 An Edwardian peridot and seed pearl guirlande brooch-cum-pendant, featuring a pear-shaped peridot, centrally set in a yellow metal mount of floral and scrolling design, accented with seed pearls and leading to a smaller peridot drop, with a brooch pin fitting to the reverse, tested as 14ct gold; 5.4 grams **£200-300**



Fine Jewellery, Watches & Silver, 18th Apr, 2024 09:30

- 6 An opal and ruby pendant, featuring a large oval cabochon of a precious opal of 2.4 x 1.5 cm, displaying medium play-of-colour ranging from green to purple on a light blue ground, collet set within a laurel surround, highlighted with circular-cut rubies at the cardinal points, bail stamped '14K', drop length 4.5 cm, weighs 10.3 grams. **£500-700**



- 7 A portrait miniature pendant, depicting a 19th-century young girl wearing a white bonnet and dress with a pink sash, in a rose metal pendant mount tested as 9ct gold, measuring approximately 75mm x 50mm, cased in a fitted box; 23.7 grams.
Ivory certification reference NYQVAAJR **£200-300**



- 8 A jet and diamond halo pendant, set in 18ct white gold, featuring an oval jet cabochon measuring approximately 7x5mm, surrounded by round brilliant diamonds with an estimated total weight, colour and clarity of approximately 0.10ct, G/VS, to an 18ct gold trace chain measuring approximately 42cm; 3.9 grams **£250-350**



- 9 A four-strand pearl choker necklace, the cultured pearls of cream body colour with pink overtones, measuring approximately 6.5mm-7mm each, leading to a pink sapphire and pearl-set 9ct gold push bar clasp, the necklace measuring approximately 35cm long, hallmarked 9ct gold, London, 1981; 81.5 grams. **£200-300**



- 10 A pair of aquamarine and diamond stud earrings, each featuring a pear cut aquamarine with an estimated weight of 0.40ct, in claw settings, encircled by channel set round brilliant cut diamonds, the pair with a total estimated diamond weight of 0.42ct, each earring measuring 11mm in length, to post fittings with hallmarks for 18ct gold, and butterfly backs marked '18k'. Total weight 2.6 grams **£250-350**



Fine Jewellery, Watches & Silver, 18th Apr, 2024 09:30

- 11 A diamond ring designed as a spray of roses, set with a round brilliant-cut diamond with an estimated weight of 0.50ct and a further round brilliant-cut diamond with an estimated weight of 0.03ct, in pink metal testing as 14ct, ring size approx. J, misshapen and split shank. Total weight 6.4 grams **£200-300**



- 12 A diamond-set leaf brooch, depicting two leaf motifs, pavé set with round brilliant diamonds, to interlocking stems set in 18ct yellow gold, measuring approximately 68mm across, with a brooch pin fitting to the reverse, 12.8 grams **£250-350**



- 13 An expandable bracelet, with hinged hollow cruciform links, pink metal stamped '585', internal circumference could be expanded from 8.5 to 20.0 cm, total weight of item 11.9 grams. **£200-300**



- 14 An emerald and white sapphire pendant, set with a central oval-cut emerald in claw mount, approximately measures 14.0 x 11.5 x 5.5 mm, above a ribbed surround with a single stone white sapphire surmount, unmarked yellow metal mount testing 14 carat gold, 2.6cm wide, total weight 9.16 grams. **£200-300**



- 15 An old-cut diamond solitaire ring, coronet-set with an oval old-cut diamond of tinted yellow colour, approximately measuring 5.6 x 4.4 x 2.7 mm, with an estimated weight of 0.45ct, between tapered shoulders to white metal shank marked '18ct', size I, 2.4 grams. **£300-500**



Fine Jewellery, Watches & Silver, 18th Apr, 2024 09:30

- 16 A seed pearl crescent stick pin, the crescent measuring 11mm diameter, with a seed pearl trefoil cluster within, to a pin measuring 5.5cm in length, in unmarked yellow metal, x-ray tested as 14ct head and 9ct pin, total weight 1.8 grams, cased. **£100-150**



- 17 A Whitby jet and diamond drop pendant on chain, featuring a teardrop-shaped jet cabochon of 13.0 x 9.5 mm, claw-set to a diamond-set ring surmount leading to a tapered bar bail, with an estimated total diamond weight of 0.22ct, suspending from a fine cable link chain with lobster clasp, London assay marks for 18ct gold, 4.0 cm drop, 41.0 cm long, weighs 5.2 grams. **£300-500**



- 18 A ruby and diamond brooch, designed as a stylised flower set with rubies, with single cut diamonds set to the petals, the brooch measuring 24 x 22mm, stamped '18ct' to the reverse, with brooch pin fitting. Total weight 5.4 grams **£150-250**



- 19 An emerald and diamond three stone ring, set with an emerald measuring 8 x 6 x 3.6mm, flanked by round brilliant cut diamonds, with a total estimated diamond weight of 0.40ct, in a yellow metal mount stamped '750', ring size N. Total weight 4.6 grams **£300-500**



- 20 A diamond-set bow dress clip/brooch, the central bow and ribbons claw-set with single-cut diamonds, accented by six round brilliant diamonds, in an unmarked white metal mount tested as 14ct gold, with a hinged double pin fastening to the reverse; 3.0 x 3.0 cm, 5.92 grams **£200-300**



Fine Jewellery, Watches & Silver, 18th Apr, 2024 09:30

- 21 Two Chinese nephrite bracelets, comprising curved nephrite bars, flanked with pierced spacers spelling auspicious blessings '福祿壽全', completed with conforming box clasp, both marked '14K' and measuring 21.3 cm, total weight of item 42.2 grams. (2) **£250-350**



- 22 A double-row cultured pearl necklace with diamond clasp, together with a pair of pearl and diamond cluster earrings; the necklace strung with two strands of cultured pearls, white with silver overtones, measuring approximately 6 - 6.5mm diameter, the necklace measuring 68cm, to a box clasp set with round brilliant cut diamonds in a rectangular floral design, with a total estimated diamond weight of 1.00ct, marked '585' to the reverse, with safety catch, in a Mikimoto case, the earrings in an abstract lightning bolt design, each set with single-cut diamonds and a cultured pearl measuring 8.2mm in diameter, the pair with a total estimated diamond weight of 0.40ct, each earring measuring 21mm in length, with post fittings and butterfly backs, marked '585'. Total combined weight 84.2 grams (2) **£1,500-2,000**



- 23 A diamond three-stone ring, claw-set with three round brilliant diamonds, the central stone measuring approximately 4.2mm, flanked by two smaller round brilliant diamonds measuring approximately 3.8mm each, in a yellow metal mount marked '750', size K with two sizing beads; 3.4 grams **£200-300**



- 24 A diamond solitaire pendant, the round brilliant diamond measuring approximately 3.7mm, with an estimated carat weight of 0.20ct, claw-set in an 18ct white gold mount; 0.4 grams **£200-300**



Fine Jewellery, Watches & Silver, 18th Apr, 2024 09:30

- 25 An opal and diamond half-hoop ring, featuring three graduated oval cabochons, displaying spectral play-of-colour on a light translucent ground, interspersed by old-cut diamond accents, in a pierced scrollwork gallery, yellow metal struck '18', size R, 4.6 grams. **£500-700**



- 26 A gem-set brooch in 18ct bi-coloured gold, of aigrette form, featuring a teardrop-shaped peristerite cabochon (other names: rainbow moonstone/ white labradorite) in collet, approximately measures 16.0 x 13.3 mm, emanating stylised feathers with diamond accents, London hallmarked 1997, maker's mark 'MJV', 7.5 cm long, 15.0 grams. **£300-500**



- 27 A diamond solitaire ring, the central round brilliant diamond measuring approximately 4.85mm, with an estimated carat weight of 0.40ct, claw-set to a white metal mount stamped '14K', the shoulders channel-set with eleven round brilliant diamonds, size M1/2; 3.6 grams **£300-500**



- 28 An aquamarine and diamond-set oval pendant, featuring an oval aquamarine, with an estimated carat weight of 1.07ct, surrounded by round brilliant diamonds, with an estimated total carat weight of 0.25ct, in an 18ct white gold mount, to a white metal chain marked '925'; 6.1 grams **£350-450**



- 29 A cultured pearl necklace with diamond-set clasp, comprising a row of unified round cultured pearls, of approximately 7.5 mm in white colour with light pink overtones, hand-knotted to a ball clasp in brush finish, interspersed with flush-set diamond accents, yellow metal marked '750' and maker's mark 'JKA', overall length 43.0 cm, in Boodles case, total weight of item 37.9 grams. **£400-600**



Fine Jewellery, Watches & Silver, 18th Apr, 2024 09:30

- 30 An Art Deco diamond and ruby quatrefoil ring, the panel is constructed by four old-cut diamonds within a border of calibr  -cut synthetic rubies, with an estimated total diamond weight of 0.78ct, between tapered shoulders, unmarked metal testing as 18ct, ring head 12.8 x 10.4 mm, size L, total weight of item 1.9 grams. **  300-500**



- 31 A diamond ring set with a triple row of round brilliant-cut diamonds, with a total estimated weight of 0.60ct, to a fine shank, in unmarked yellow metal testing as 18ct, ring size H. Total weight 2.7 grams **  200-300**



- 32 A Whitby jet and diamond double heart pendant on chain, featuring two heart-shaped jet cabochons, framed by an array of diamonds with an estimated total weight of 0.53ct, suspending from a cable link chain, both with London hallmarks for 18ct white gold, drop length 3.5 cm, 41.0 cm long, total weight of item 11.6 grams. **  500-700**



- 33 A diamond convertible double-clip spray brooch, each clip with a navette-shaped motif and spray, set throughout with single-cut and round brilliant-cut diamonds, the pair with a total estimated diamond weight of 2.20ct, convertible into a single clip brooch measuring 43 x 38mm, in white metal testing as platinum. Total weight 22.1 grams **  800-1,200**



- 34 An unheated Burmese ruby and diamond entourage ring, centred with a cushion-cut ruby of 1.37ct, approximately measuring 5.5 x 7.4 x 3.4 mm, encircled by twelve brilliant-cut diamonds with an estimated total weight of 0.35ct, to yellow metal shank stamped '18K', ring head 13.3 x 9.8 mm, ring size K, 2.5 grams. Accompanied with a GCS certificate confirming this is of Myanmar-Mogok Origin, with no indications of heat treatment, dated October 2022. **  2,500-3,500**



Fine Jewellery, Watches & Silver, 18th Apr, 2024 09:30

- 35 A wide woven link bracelet, flat with textured details, completed with a concealed push button clasp and secured with a figure-of-eight safety catch, tongue struck with French rhino head marks for 18ct and indicating its weight, maker's mark for Roger Cabrilhac, overall dimensions 19.1 x 3.0 cm, total weight of item 92.9 grams. **£2,000-3,000**
- 36 A laboratory-grown diamond cluster ring, featuring an emerald-cut laboratory-grown diamond measuring approximately 5.1mm x 3.8mm, surrounded by two rows of laboratory-grown round brilliant diamonds in an octagonal-shaped setting, leading to laboratory-grown diamond-set shoulders, in a 9ct white gold mount, size O; 5.0 grams **£500-700**
- 37 A 9ct gold Albert chain and bloodstone swivel fob, comprising a series of curb links terminated with dog clips on both ends, attached with a T-bar and later-added swivel fob set with a round bloodstone plaque approximately measuring 18.4 mm across, fob struck with Chester hallmarks, 1916, overall length 36.5 cm, 37.4 grams. **£400-600**
- 38 A seed pearl and enamel portrait miniature pendant-cum-brooch, depicting a portrait of a lady in a pink gown, mounted in a blue enamel case surrounded by cultured seed pearls, marked 'Kt18', with a brooch pin fitting and pendant loop to the reverse, the brooch and pendant loop measuring approximately 50mm long; 15.9 grams **£200-300**
- 39 A De Beers pierced panel ring in 18ct white gold, round head of swirl design encrusted with brilliant-cut diamonds, weighing an estimated total of 1.00ct, numbered and signed, with personal engravings, ring head 2.0 cm wide, ring size O, 5.5 grams.
Together with an insurance valuation stating the colour and clarity of the diamonds are G-H and VS2-SI1. **£1,500-2,000**



Fine Jewellery, Watches & Silver, 18th Apr, 2024 09:30

- 40 A diamond bangle, in a linked cross-over design set throughout with round brilliant cut champagne diamonds, with a total estimated diamond weight of 3.00ct, stamped '750' to the reverse, with chain bracelet back, stamped '750' to the clasp, the fixed upper part of the bangle measuring 6cm inner diameter. Total weight 17.9 grams **£2,000-3,000**



- 41 A gate bracelet set with turquoise, formed of bar links in the gate design, set with cabochon turquoise, measuring 18cm in length, 8mm width, stamped '9ct' to the clasp tongue. Total weight 13.6 grams **£200-300**



- 42 A three-strand pearl choker necklace and matching bracelet, the cultured pearls of cream body colour with pink overtones, measuring approximately 7mm to 7.5mm each, both leading to pink sapphire and pearl-set 9ct gold push bar clasps, the necklace measuring approximately 40cm long and the bracelet approximately 18cm, both stamped '9ct'; 119.40 grams. (2) **£300-500**



- 43 A fancy link bracelet in 9ct rose gold, hollow links with pierced design and a scalloped edge, completed with a dog clip clasp, London 1997, 22.0 cm in length, total weight of item 20.0 grams. **£250-350**



- 44 A 9ct gold charm bracelet featuring nine charms including Lady Liberty, a Morris Minor car, a retractable fan, a William IV 1837 gold sovereign coin, a tambourine with castanets, a squirrel, a Reading coat of arms shield, a fachen and a disc depicting two fish; the curb link chain leading to a heart padlock clasp with safety chain; 41.8 grams **£700-900**



Fine Jewellery, Watches & Silver, 18th Apr, 2024 09:30

- 45 A Whitby jet and labradorite pendant in 9ct white gold, containing a shield-shaped chequerboard faceted jet in collet, suspending a triangular labradorite (trade name: rainbow moonstone) cabochon drop, Sheffield hallmarks, 4.0 cm drop, weighs 12.6 grams. **£150-200**



- 46 Tiffany - A 'Return to Tiffany' silver tag necklace, the heart shape panel inscribed 'Please return to Tiffany & Co. New York 925', the reverse signed Tiffany & Co. with London hallmarks, the necklace formed of chain and beaded sections, measuring 82cm in total length, total weight 94.4 grams, with Tiffany pouch and packaging. **£250-350**



- 47 Two items of George III mourning jewellery; comprising a navette shaped mourning brooch, the glazed compartment featuring a miniature of an urn with a border of laurel leaves over a blue enamel ground, measuring 24 x 15mm, with later brooch fitting to the reverse; and a navette shaped mourning clasp, the glazed compartment with a bow and laurel leaves over a background of woven hair, measuring 35 x 20mm, complete with corresponding clasp tongue. Total combined weight 11.8 grams (2) **£300-500**



- 48 A Victorian star brooch, set throughout with diamonds, the largest central old-cut diamond measuring approximately 3.2mm and surrounded by smaller rose-cut diamonds, radiating out to six points set with rose-cut diamonds, in a white and yellow metal mount tested as silver and 9ct gold, with a brooch pin fitting and safety chain to the reverse; measuring approximately 33mm; 4.7 grams **£250-350**



- 49 Tiffany & Co. - a Tiffany T wire bracelet in 18ct yellow gold, with double T terminals, signed and struck with London assay marks, inner diameter 5.3 cm, total weight of item 8.4 grams.#

No papers no boxes.
RRP £2,500 **£400-600**



Fine Jewellery, Watches & Silver, 18th Apr, 2024 09:30

- 50 A diamond line bracelet by David Morris, claw set with 44 round brilliant diamonds measuring approximately 3.8mm each, with a total estimated carat weight of approximately 8.80ct, in a white metal mount marked 'Pt 950', with maker's marks, measuring approximately 18cm long, in a branded box; 15.9 grams **£4,500-6,500**



- 51 A tanzanite and diamond-set drop pendant, featuring a cushion-cut tanzanite measuring approximately 8.8mm, with an estimated carat weight of approximately 3.85ct, in an 18ct white gold mount set with round brilliant diamonds, with an estimated total carat weight of approximately 0.36ct, on a white metal chain measuring approximately 40cm and marked 'Pt950'; 5.4 grams **£1,500-2,000**



- 52 An Art Deco gem-set charm bracelet, two signed Cartier; composed of a series of cable and bar links, suspending nineteen charms encrusted with polychromatic gemstones, rose-cut and old-cut diamonds; to include a Roman numerals '13' triangular charm signed 'Cartier' (one stone deficient), a Trafalgar monument charm signed 'Cartier London', Luckenbooth hearts, various animals, keys and vehicles etc. fastens with a spring-ring clasp, overall length 18.0 cm, 40.0 grams. **£1,000-1,500**



- 53 A diamond solitaire ring, set with an emerald-cut diamond with an estimated weight of 1.20ct, in a claw setting to tapered shoulders leading to a wide D-section shank marked 'PT 950', ring size J 1/2. Total weight 8g **£2,000-3,000**



- 54 A rope link guard chain measuring 150cm in length, the bolt ring clasp stamped '9ct'. Total weight 32.6 grams **£350-450**



Fine Jewellery, Watches & Silver, 18th Apr, 2024 09:30

- 55 A jet and diamond-set drop pendant, the pear-shaped jet cabochon in a diamond-set mount with millegrain detailing, leading to an 18ct white gold chain measuring approximately 45cm; 6.1 grams **£300-500**
- 56 An Edwardian diamond and tourmaline guirlande pendant, with a round centrally-set dark green tourmaline measuring approximately 7mm, surrounded by old-cut diamonds in an open-back yellow and white metal mount, tested as 14ct gold and silver, measuring approximately 46mm long; 10.9 grams **£600-800**
- 57 A Whitby jet and labradorite link bracelet in silver, comprising four pear-shaped jets flanking three marquise-shaped labradorite (trade name: rainbow moonstone), completed by a marquise-shaped and textured box clasp, Sheffield hallmarks, 19.0 cm long, total weight of item 43.8 grams. **£100-150**
- 58 A grey moonstone cabochon cocktail ring, featuring a round moonstone cabochon of 13.5 x 13.5 x 9.0 mm, claw-set in between bifurcated shoulders to a tapering open shank, yellow metal marked '750', size Q, total weight of item 10.4 grams. **£250-350**
- 59 Mikimoto - a single-strand South Sea pearl with a diamond-set clasp, comprising a row of graduated pearls of silver body colour with pink overtones, largest baroque pearl approximately measures 14.0 x 12.0 mm, smallest round pearl 8.8 mm in diameter, suspending a 'M' charm, completed with a ball clasp set with diamond accent, signed Mikimoto, British assay marks for 18ct white gold, 46.0 cm in length, cased, 72.5 grams. **£800-1,200**



Fine Jewellery, Watches & Silver, 18th Apr, 2024 09:30

- 60 An opal-set floral brooch cum pendant on chain, the openwork mount centred with a flowerhead cluster, set throughout with round precious opal cabochons showing strong play-of-colour, and interspersed with green stones accents, to a conforming bail and brooch fittings to verso, yellow metal testing 15ct, 5.3 cm long, suspending on a twisted rope chain with tube clasp marked '9c' and measuring 41.0 cm, total weight of item 10.4 grams. **£200-300**



- 61 A diamond-set spray brooch, of floral and ribbon design, set with sixteen old-cut diamonds, with a total estimated diamond carat weight of approximately 2.35ct, in an open back white metal mount tested as 14ct gold, with a brooch pin fitting and safety chain to the reverse; measuring approximately 35mm; 11.1 grams **£400-600**



- 62 A diamond solitaire platinum ring, featuring a baguette-cut diamond, with an estimated carat weight of 0.66ct, in a semi-bezel mount, size J; 6.1 grams **£500-700**



- 63 A bar brooch set with a round opal doublet, approximately measures 14.0 mm across, displaying strong spectral play-of-colour on a blue ground, set within a millgrained collet between bifurcated bars, brooch fittings to verso, unmarked yellow metal testing 18ct, 6.5 cm wide, 7.0 grams. **£300-400**



- 64 Piaget - a diamond-set rose Dentelle necklace in 18ct rose gold, the openwork rosette pendant highlighted with a brilliant-cut diamond of 0.02ct, to a fine cable link chain, signed and numbered, Swiss convention marks, 42.0 cm long, total weight of item 4.0 grams.
Together with original packaging and papers.
RRP 2.220 € **£400-600**



Fine Jewellery, Watches & Silver, 18th Apr, 2024 09:30

- 65 An ametrine pendant, featuring a faceted ametrine measuring approximately 23mm x 16.5mm, in a geometric yellow metal mount stamped '18K', 15.5 grams **£200-300**



- 66 A Victorian gem-set butterfly brooch, the butterfly's thorax and abdomen set with a sapphire and precious opal, the opal with medium spectral play-of-colour on a translucent background, leading to wings set with rubies and rose-cut diamonds, with one ruby deficit, in an open-back yellow and white metal mount, tested as 14ct gold and silver, with the brooch fitting to the reverse; measuring approximately 36mm x 20mm; 4.5 grams **£300-500**



- 67 A diamond-set plaque ring of rhombus shape, the pierced panel with millgrain details centred with a rose-cut diamond slice in a buttercup mount, further accented with diamond chips, between tapered shoulders, yellow metal shank struck with French eagle head assay mark for 18ct, ring head 15.6 x 11.1 mm, ring size P, total weight of item 1.9 grams. **£200-300**



- 68 A seven-stone diamond half-hoop ring in 18ct yellow gold, set with a row of slightly graduated brilliant-cut diamonds, with an estimated total weight of 0.96ct, shank stamped with Birmingham import marks, 1992, size O, 2.7 grams. **£500-700**



- 69 A diamond solitaire ring, featuring a round brilliant cut diamond with a weight of 0.35ct, G colour, I1 clarity, in a four claw cross-over setting, the shank with laser engraved hallmarks for 18ct white gold, ring size L. Total weight 2.3 grams. With a ring case and blue box for The Diamond Story, accompanied by booklet and report card stating diamond grade as G / I1. **£300-500**



Fine Jewellery, Watches & Silver, 18th Apr, 2024 09:30

- 70 A morganite and diamond-set pendant, the pear-shaped morganite with an estimated carat weight of 2.02ct, surrounded by round brilliant diamonds, with an estimated total carat weight of 0.16ct, with a diamond-set pendant loop in 18ct rose gold, to an 18ct gold chain measuring approximately 40cm; 4.7 grams **£400-600**



- 71 Cartier - a Vendôme Louis Cartier wedding band in 18ct tri-coloured gold, constructed by three integrated varicoloured gold bands with grooved details, signed and numbered ROZ046, Swiss convention marks, width 4.8 mm, size 58 (Q½), total weight of item 7.1 grams.
No box or papers.
RRP £1,860 **£350-450**



- 72 A pair of aquamarine and diamond cluster stud earrings, each containing an oval-cut aquamarine of bright light blue colour, approximately measuring 7.0 x 5.0 mm, claw-set within a diamond-set surround, fitted with peg and butterfly, London assay marks for 18ct white gold, 2.8 grams. **£300-500**



- 73 A tanzanite and diamond-set pendant, featuring a trilliant-cut tanzanite, with an estimated carat weight of 0.61ct, set with three round brilliant diamonds, with a total estimated carat weight of 0.09ct, in a white metal mount stamped '18K'; 0.6 grams **£200-300**



- 74 A pair of prasiolite and diamond earrings, each earring set with two oval prasiolite with a brilliant-cut diamond between, in claw settings with post fittings, measuring 23mm in total length, set in white metal testing as 18ct. Total weight 8.6 grams **£200-300**



Fine Jewellery, Watches & Silver, 18th Apr, 2024 09:30

- 75 A diamond solitaire pendant, featuring a round brilliant diamond, with an estimated carat weight of 0.50ct, claw-set in an 18ct white gold mount, to a white metal spiga chain marked '750', measuring approximately 45cm with an adjustable jump ring at 40cm; 3.6 grams **£500-700**



- 76 A double-row fancy link bracelet with a hexagonal barrel clasp, featuring floral engravings and engine-turned patterns, connected with a safety chain, unmarked, barrel clasp testing 9ct, later-added chains testing 14ct, overall length 19.5 cm, total weight of item 27.8 grams. **£500-700**



- 77 A diamond-set cross pendant in 14ct white gold, of stepped design, channel-set calibre-cut diamonds accented through the centre, and further highlighted with brilliant-cut diamonds at the corners, to a hinged bail, London hallmarked 2004, maker's mark 'TJ' in a shield, 6.0 cm drop length, weighs 13.9 grams. **£400-600**



- 78 A Victorian enamel snake bracelet, the head set with graduated split pearls and cabochon glass eyes, suspending an enamel heart locket from clasped jaws, with glazed compartment to reverse, with a sinuous tapering popcorn link body terminating with a push button clasp, unmarked, 19.0 cm long, 2.5 cm drop, cased, total weight of item 10.1 grams. **£300-500**



- 79 A diamond solitaire pendant, the round brilliant diamond measuring approximately 5.1mm, with an estimated carat weight of 0.50ct, claw-set in an 18ct white gold mount; 0.7 grams **£300-500**



Fine Jewellery, Watches & Silver, 18th Apr, 2024 09:30

- 80 An aquamarine and diamond necklace, featuring a cushion cut aquamarine with an estimated weight of 2.86ct, claw set to a pendant drop with hallmarks for 18ct gold, the bail set with a cluster of round brilliant cut diamonds, with further diamond clusters set to the integral chain, with a total estimated diamond weight of 0.17ct, the fine cable link chain measuring 46.5cm, marked '750'. Total weight 4.9 grams **£600-800**



- 81 A Whitby jet five-stone dress ring in 18ct white gold, claw-set with five oval jet cabochons, interspersed by diamond highlights on the edge, to a tapering shank, London assay marks, ring size Q½, total weight of item 4.1 grams. **£200-300**



- 82 A diamond-set ring, featuring nine princess-cut diamonds, channel-set in a row and surrounded by round brilliant diamonds, in an 18ct white gold mount, size O; 5.4 grams **£250-350**



- 83 A cultured pearl and diamond cross-over ring, featuring a white cultured pearl with silver overtones and a black Tahitian cultured pearl, each measuring 8.2mm in diameter, surrounded by a cluster of round brilliant cut diamonds, in a cross-over design set with baguette cut diamonds, with a total estimated diamond weight of 1.80ct, the shank with French hallmark for platinum. Total weight 9.5 grams **£600-800**



- 84 A pair of tanzanite and diamond earrings, the oval tanzanites measuring approximately 6x4mm each, with an estimated total carat weight of approximately 0.93ct, claw-set with round brilliant diamonds, with a total estimated carat weight of 0.10ct, in white metal mounts marked '750'; 1.7 grams **£250-350**



Fine Jewellery, Watches & Silver, 18th Apr, 2024 09:30

- 85 A blister pearl dress ring in 9ct gold, set with an irregularly shaped Baroque blister pearl, with peacock lustre on a greyish ground, approximately measures 11.3 x 12.3 mm, mounted to a D-section shank, Sheffield assay marks, size M½, 3.7 grams. **£400-600**



- 86 An aquamarine and diamond pendant, featuring a pear cut aquamarine with an estimated weight of 1.55ct, encircled by round brilliant cut diamonds, from a diamond set bail, with a total estimated diamond weight of 0.16ct, with a fine cable link chain measuring 40cm, the pendant and chain with hallmarks for 18ct gold. Total weight 3.9 grams **£300-500**



- 87 A 'Day and Night' flip-over eternity ring, with half of the central band channel-set with table-cut rubies and the other half with table-cut sapphires, attached with two hinged diamond-set swivel half bands, with millgrain details on the scalloped edge, yellow metal tests as 18ct, size P, 4.6 grams. **£300-500**



- 88 A pair of Whitby jet and diamond drop earrings in 18ct white gold, each containing a teardrop-shaped jet cabochon of 15.2 x 7.6 mm, claw-set within a diamond halo surround, dangling from shepherd's crook fittings also set with brilliant-cut diamonds, both together with an estimated total diamond weight of 0.73ct, Sheffield assay marks, drop length 3.5 cm, total weight of items 9.7 grams. **£500-700**



- 89 A 19th century French emerald, diamond and seed pearl sword jabot pin, set with emeralds and rose cut diamonds to the hilt, with a seed pearl set to the pommel, the blade in the form of a pin with French eagle's head hallmark for 18ct gold, with a seed pearl set chain linking the pin to the scabbard closure, the pin measuring 77mm in total when closed. Total weight 6.3 grams **£400-600**



Fine Jewellery, Watches & Silver, 18th Apr, 2024 09:30

- 90 An amethyst and diamond halo dress ring in 18ct white gold, featuring three graduated chequerboard-cut amethyst, in different purple shades, framed by an array of diamond accents, to a tapering flat shank, London assay marks 2013, size N, 7.7 grams. **£300-500**



- 91 A single-strand cultured pearl necklace and bracelet, the necklace featuring pearls of white body colour with silver overtones, measuring approximately 6.3mm each, leading to a white metal clasp stamped '750', the necklace measuring approximately 45cm; together with a cultured pearl bracelet measuring approximately 19cm long, with a white metal clasp marked '375'; 36.6 grams **£200-300**



- 92 A moonstone and ruby dress ring, centred with a round moonstone cabochon of 10.7 mm, in a surround embellished with eight circular-cut rubies, to an open shank, yellow metal marked '14', ring head 2.1 cm wide, ring size N, 10.0 grams. **£200-300**



- 93 An opal doublet and diamond cluster dress ring, the oval cabochon of 10.5 x 6.0 mm, displays strong play-of-colour ranging from green to purple on a dark blue ground, in a millgrain collet encompassed by an array of single-cut diamonds, between tapered shoulders, white metal marked '18 & PT', ring head approximately measures 1.5 x 1.0 cm, ring size P, total weight of item 2.7 grams. **£600-800**



- 94 A ruby and diamond necklace, the centre set with foliate sprays of round brilliant-cut diamonds and mixed-cut rubies, stamped '18k' to spray, with an associated bead chain stamped '750', overall length 47.7 cm, gross weight 14.49 grams. **£500-700**



Fine Jewellery, Watches & Silver, 18th Apr, 2024 09:30

- 95 A hinged bangle in 9ct yellow gold, of angular form, constructed by two halves connected with hinge and completed with a tension hook clasp, Sheffield 2008, internal diameter 6.3 cm, total weight of item 28.4 grams. **£300-500**



- 96 A gem-set brooch of tulip form, flowerhead mount with millgrain edges, comprising layered petals encrusted by circular-cut sapphires in gradient pink shades, encasing stamen highlighted by old European-cut diamonds, leading to a graduated diamond stem, emanating leaves with circular-cut Tsavorite in gradient green shades, estimated total diamond weight 1.35ct, fitted with double-pin brooch fittings, marked '18K', with Israeli assay marks and French owl import mark, laser engraved with maker's mark 'GBA', overall dimensions 7.2 x 4.0 cm, in fitted case, total weight of item 29.6 grams. **£2,000-3,000**



- 97 An Art Deco diamond bracelet, set throughout with old cut, single cut and rose cut diamonds, with a total estimated diamond weight of 3.00ct, in a geometric design with alternating ring shape and rectangular panels, with openwork decoration and engraving to the outer edges, the bracelet measuring 10mm in width, 18cm in length, with concealed clasp, marked '18ct' to the tongue. Total weight 23.9 grams. **£3,000-4,000**



- 98 A twisted rope bracelet in 18ct bi-coloured gold, of textured design, completed with a concealed push-button clasp and figure-of-eight safety catch, Italian assay marks and British import marks, Birmingham 1963, sponsor's mark 'RHB', overall length 19.7 cm, total weight of item 33.8 grams. **£1,000-1,500**



- 99 A pair of jet and diamond-set drop earrings, claw-set with five graduated round brilliant diamonds, with an estimated total carat weight, colour and clarity of approximately 2.29ct, G, SI, leading to pear-shaped jet cabochons, in 18ct white gold mounts, with post and butterfly fittings to the reverse; 6.7 grams **£1,500-2,000**



Fine Jewellery, Watches & Silver, 18th Apr, 2024 09:30

- 100 A star sapphire and diamond cluster ring in 18ct white gold, centred with an oval star sapphire cabochon of light greyish-blue colour, approximately measuring 7.8 x 6.5 x 4.0 mm, claw-set within a two-tiered surround between bifurcated shoulders, set with diamond-accents with an estimated total weight of 0.58ct, London assay marks, ring head 1.4 x 1.2 cm, ring size N, total weight of item 7.1 grams. **£800-1,200**



- 101 A diamond-set full eternity ring, featuring round brilliant diamonds, with an estimated total carat weight of approximately 0.39ct, grain-set in a white metal mount, size K1/2; 4.4 grams **£300-500**



- 102 An emerald and diamond bangle, set with a row of round emeralds interspersed with single-cut diamonds, to a scrolling gallery, unmarked yellow metal, the hinged bangle measuring 4.8mm wide at the widest point, with an inner diameter of 58mm. Total weight 11.2 grams **£300-500**



- 103 A diamond solitaire ring, set with a round old-cut diamond with an estimated weight of 0.30ct, in a claw setting, with tapered shoulders leading to the fine shank, white metal unmarked, ring size G 1/2. Total weight 1.2 grams **£200-300**



- 104 A pair of topaz and diamond halo stud earrings, each composed with a round chequerboard-cut white topaz within a diamond-set surround, fitted with peg and butterfly, white metal marked '750', measuring 11.1 mm wide, 4.0 grams. **£300-500**

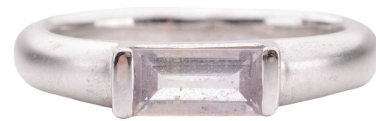


Fine Jewellery, Watches & Silver, 18th Apr, 2024 09:30

- 105 A Chinese zodiac fringe necklace, composed of a thick curb link chain, suspending six carved jadeite plaques depicting six out of twelve zodiac animals, and further five Guanyin plaques carved in serpentine, completed with a lobster clasp, yellow metal marked '375', 52.0 cm long, total weight of item 111.6 grams. **£400-600**



- 106 An amethyst solitaire ring, bar-set with a baguette-cut amethyst of tinted purple, approximately measures 7.0 x 3.5 mm, between shoulders with satin finish, white metal marked '585 14K', ring size M, 4.5 grams. **£200-300**



- 107 An early 20th-century opal half-hoop ring in 18ct gold, featuring five graduated cabochon opals, of medium spectral play-of-colour on a translucent background, leading to a court-shaped shank, rubbed hallmarks, size M; together with a Victorian base metal brooch, featuring seven fob seals, each engraved with a day of the week, leading to a later-added base metal bow brooch; total weighable: 2.4 grams **£200-300**



- 108 A pair of gem-set earclips, the curved rows set with calibre-cut sapphires and round brilliant diamonds, in yellow metal mounts stamped '750'; with hinged post and clip fittings, making them suitable for pierced and non-pierced ears; 7.9 grams **£400-600**



- 109 A jadeite and diamond cluster pendant and matching ring, of tiered foliate design, the oval and pear-shaped jadeite cabochons accented with round brilliant diamonds, both in white metal mounts stamped '18K' and tested as 18ct gold, ring size I; the pendant leading to a fancy link chain, tested as silver; total weight without chain: 16.2 grams. (2) **£500-700**



Fine Jewellery, Watches & Silver, 18th Apr, 2024 09:30

- 110 A jet and diamond-set pendant, featuring a pear-shaped jet cabochon, in a diamond-set open drop 18ct white gold mount, the diamonds with an estimated total carat weight of approximately 0.31ct, leading to a foxtail chain measuring approximately 40cm; 6.6 grams
P JW-131 **£500-700**



- 111 A diamond solitaire ring and two diamond-set half-hoop eternity rings; the diamond solitaire ring set with a round brilliant-cut diamond with an estimated weight of 0.70ct, between diamond-set shoulders, with partial rubbed hallmarks for 18ct gold, ring size L; the two chevron-shaped half-hoop rings each set with round brilliant-cut diamonds with a total estimated weight of 0.45ct, to a shaped band with hallmarks for 18ct white gold, ring size L. Total combined weight 10.2 grams. (3)
Accompanied by an insurance valuation and AGI certificate for the solitaire ring, stating the central diamond has been assessed as D colour, SI2 clarity, 0.70ct, the diamonds in total including those set to the shoulders averaging F colour, SI2 clarity, 1.00ct in total. **£1,000-1,500**



- 112 A filigree feather brooch, depicting three feathers of graduated sizes connected at the quills, in a yellow metal tested as 14ct gold, with a brooch pin fitting to the reverse, measuring approximately 63mm; 14.7 grams **£300-500**



- 113 A fancy link bracelet of chevron design, completed with a concealed tongue clasp and secured with a figure-of-eight safety catch, struck with Italian assay marks '750' and registration mark '418 VI' for Tapparo Emilio, overall length 19.5 cm, 32.1 grams. **£600-800**



Fine Jewellery, Watches & Silver, 18th Apr, 2024 09:30

- 114 An amethyst fleur-de-lis cocktail ring, the fleur-de-lis emblem set with rose cut diamonds and mounted on a faceted amethyst, measuring approximately 22mm, surrounded by a pierced gallery of stylised design, and leading to a yellow metal shank, tested as 18ct gold, size S1/2; 15.7 grams **£300-500**



- 115 A diamond solitaire ring, featuring an emerald-cut diamond, with an estimated carat, colour and clarity of 0.75ct, F/VS2, claw-set in a platinum mount, size N; 6.1 grams **£800-1,200**



- 116 An 18ct gold "Possession" ring, by Piaget. The central band rotates and is set to a wider recessed band. Signed Piaget, with serial number "A092559" and Swiss hallmarks to the inside of the band. Ring size O. Gross weight 18.77g. **£600-800**



- 117 A diamond solitaire ring, with a round brilliant cut diamond measuring approximately 5.1mm, with an estimated carat weight of 0.50ct, claw-set in a white metal setting tested as platinum, size J1/2; 4.6 grams **£500-700**



- 118 A pair of aquamarine and diamond halo earrings, each aquamarine measuring approximately 6.1mm, with an estimated total carat weight of approximately 1.43ct, surrounded by round brilliant diamonds, with an estimated total carat weight of approximately 0.21ct, claw-set in white metal mounts marked '18K'; 3.0 grams **£300-500**



Fine Jewellery, Watches & Silver, 18th Apr, 2024 09:30

- 119 A diamond-set band ring. Stamped 750. The D-shaped band is set with 9 round brilliant cut diamonds, within a rubover setting. The total carat weight is approximately 0.09cts. The white metal is stamped "750" to the inside of the band. Ring size P. Gross weight 6g. **£300-500**



- 120 An 18th century Iberian emerald pendant, designed as a cross set with table-cut emeralds, the central largest emerald measuring approximately 5.2 x 5mm, encircled by smaller emeralds in a domed cluster, with further table-cut emeralds set to the arms of the cross, with emerald-set floral decoration between, the pendant measuring 35 x 35mm, to a fine chain measuring 51.5cm, marked '375'. Pendant tests as 18ct but some areas appear to be gold filled. Total weight 6.2g **£600-800**



- 121 A diamond and ruby-set angular dress ring, featuring calibré-cut rubies set between two rows of princess-cut diamonds, with a pierced gallery, in a yellow metal mount stamped '750', with maker's marks 'MKS', size P; 12.7 grams **£600-800**



- 122 An emerald and diamond cluster ring, set with an emerald measuring 10.8 x 8.2 x 5.2mm, encircled by round brilliant cut diamonds, with a total estimated diamond weight of 1.40ct, in claw settings to a square section shank with hallmarks for 18ct gold, ring size M 1/2. Total weight 6.1 grams **£500-700**



- 123 A pair of diamond heart earrings, by Kiki McDonough, each designed as a linear heart-shaped leaf, set with round brilliant-cut diamonds, suspended from a further line of diamonds, the pair with a total estimated diamond weight of 0.60ct, with post fittings marked '750 kiki' and butterfly backs also marked '750 kiki'. Total weight 3.8 grams **£200-300**



Fine Jewellery, Watches & Silver, 18th Apr, 2024 09:30

- 124 An old-cut diamond five-stone ring, set with a row of cushion-shaped old-cut diamonds with a total estimated weight of 0.50ct, in claw settings, the shank with partial hallmarks for 18ct gold, ring size K 1/2. Total weight 3 grams. **£300-500**



- 125 A pair of diamond drop earrings, set with round brilliant cut diamonds in a drop shape and cluster design, the pair with a total estimated diamond weight of 0.70ct, each earring measuring 30mm, with post fittings marked '18k', and butterfly backs. Total weight 4.2 grams **£400-600**



- 126 A gem-set plaque brooch-cum-pendant, the central oval plaque depicting Neptune with his trident and chariot, the diamond-set surround leading to sapphire and emerald drops, each suspended from diamond-set bar links; the fixed pendant loop featuring a marquise-shaped ruby on a reeded mount, with a brooch pin fitting to the reverse, measuring approximately 63mm long; 21.0 grams **£500-800**



- 127 A sapphire and diamond cluster ring, featuring a central round brilliant cut diamond with an estimated weight of 0.50ct, encircled by a row of sapphires surrounded by round brilliant cut diamonds, the ring with a grand total estimated diamond weight of 1.00ct, the cluster measuring 16.5mm in diameter, in claw settings to a high gallery, the shank testing as 18ct, marked '...ct & PLAT', ring size N 1/2, Total weight 6.2 grams **£300-500**



- 128 An Assyrian Revival lozenge brooch, centred with an applied motif of Lamassu and a winged genie holding bucket and cone, on a plaque decorated with cablework and beaded details, an oval glazed compartment and brooch fittings to verso, unmarked yellow metal testing 15ct, 4.0 cm wide, 10.2 grams. **£150-250**



Fine Jewellery, Watches & Silver, 18th Apr, 2024 09:30

- 129 A charm bracelet in 9ct gold, composed of a series of cable links, suspending with nineteen charms, mostly with British hallmarks for 9ct including a signet ring, musical instruments, an emergency ten shilling note in case, and a cased one pound note etc. fastens with a spring-ring clasp and a heart-shaped padlock, overall length 19.0 cm, 42.1 grams. **£500-700**



- 130 A gem-set cocktail ring, centred with a square scissors-cut garnet in collet, shoulders inlaid with dark mother-of-pearl, bordered with lines of baguette-cut diamonds, signed 'de Angeli', unmarked yellow metal testing 18ct, ring measuring 19.5 mm at widest and 6.6 mm at thinnest, ring size N½, total weight of item 21.7 grams. **£500-700**



- 131 A pair of amethyst and diamond drop earrings, each comprising a diamond-set hoop surmount, suspending a detachable cushion-cut amethyst drop of pale purple colour, white metal marked '750', 2.0 cm drop length, total weight of item 7.3 grams. **£300-500**



- 132 A diamond snowflake pendant, set throughout with round brilliant cut diamonds, with a total estimated diamond weight of 1.13ct, in a snowflake design with diamond set bail, the reverse of the pendant with hallmarks for 18ct white gold, with a fine cable link chain measuring 40cm, with hallmarks for 18ct white gold. Total weight 7.5 grams **£800-1,200**



- 133 A serpent necklace in 9ct yellow gold, with an articulated coil body terminates to a tapering tail, head engraved with bright-cut decorations and set with ruby eyes, push button clasp, British convention marks, approximately 40.5 cm long, 35.4 grams. **£400-600**



Fine Jewellery, Watches & Silver, 18th Apr, 2024 09:30

- 134 A Victorian rose cut diamond brooch, in a scrolling foliate and floral design set with rose cut diamonds in closed foil back settings, featuring a cushion shape old cut diamond to the centre, and suspending a diamond set drop in the same style, the brooch with a total estimated diamond weight of 6.00ct, measuring 50 x 58mm, with later removable brooch fitting and two pendant hooks. Total weight 20.5 grams **£800-1,200**



- 135 A diamond solitaire ring with diamond set shoulders, featuring a round brilliant cut diamond with an estimated diamond weight of 2.80ct, in a claw setting, the shoulders set with round brilliant cut diamonds, bringing the total estimated diamond weight to 4.20ct for the ring, the shank marked '750' to the shank, ring size L 1/2. Total weight 7 grams **£800-1,200**



- 136 A diamond solitaire ring, the round brilliant diamond measuring approximately 8.9mm, with an estimated carat weight, colour and clarity of approximately 2.50ct, L/M, I1/I2, claw-set in a yellow metal mount tested as 18ct gold, the gallery featuring scrolling detailing and split shoulders leading to a court shaped shank, size T; 7.1 grams **£800-1,200**



- 137 An unheated colour-change Ceylon sapphire solitaire ring, featuring an octagonal step-cut sapphire of medium purplish-blue body colour that exhibits a change of colour to pale pinkish-purple when viewed under certain light sources, measuring approximately 14.5 x 10.7 x 8.7mm with an estimated weight of 14.5ct, claw-set in an asymmetrical 18ct yellow gold mount, with diamond-set shoulders, size L1/2; 12.1 grams
Together with a copy of a laboratory certificate from the Gemmological Certification Services confirming the sapphire to be Sri Lankan in origin, with no indications of heating. (Ref. 5783-193) **£8,000-12,000**



- 138 A pink sapphire and diamond cocktail ring of knot design, circa 1960s, centred with a navette-shaped pink sapphire of 9.1 x 6.3 x 4.5 mm, mildly dichroic with intense reddish-pink body colour, claw-set within a stepped surround encrusted with calibr  -cut diamonds, further embellished with baguette-cut diamonds and transitional-cut diamonds on shoulders, white metal marked '750', ring head 2.3 x 1.7 cm, ring size Q, total weight of item 17.2 grams. **£5,000-7,000**



Fine Jewellery, Watches & Silver, 18th Apr, 2024 09:30

- 139 An Art Deco style beaded sapphire and diamond sautoir necklace, composed of five strands of faceted sapphire beads, with diamond-set push button tongue clasp terminals, attached to a pendant of geometrical form, with a hinged bail, encrusted throughout with baguette-cut and old European-cut diamonds, suspending below with beaded sapphire strands with diamond terminals, estimated total diamond weight 6.80ct, unmarked white metal testing platinum, pendant drop length 8.5 cm, overall length 72.0 cm, total weight of item 116.0 grams. **£6,000-8,000**



- 140 An unheated Ceylon sapphire and diamond dress ring, claw-set with an octagonal-cut sapphire of purplish-blue colour, approximately measuring 12.5 x 9.2 x 4.7 mm, flanked by two trapeze-cut diamonds on shoulders, yellow metal mount testing as 18ct, white metal shank testing as platinum, ring size M, 4.6 grams. Accompanied with a GCS certificate confirming this is of Sri Lanka origin, with no indications of heat treatment, dated November 2023. (Ref.: 5783-3698) **£5,000-7,000**



- 141 A sapphire and diamond trilogy ring, centred with a cushion-shaped sapphire of intense blue colour, approximately measures 7.0 x 5.8 x 4.0 mm, coronet-set between two old-cut diamonds with an estimated total weight of 1.39ct, unmarked yellow metal testing 18ct, size P, total weight of item 3.8 grams. **£1,500-2,000**



- 142 An old-cut diamond and pearl cocktail ring, the principal old European-cut diamond measuring approximately 7.1mm in diameter, with an estimated carat weight of 1.30ct, flanked by two pearls and two additional old-cut diamonds, with an estimated carat weight of 0.25ct each, in a diamond-set split mount with millegrain detailing, tested as platinum; size O; 11.1 grams **£3,000-5,000**



- 143 Georg Jensen - a 'Möbius' closed bangle, constructed with a tapering and slightly concave strip, designed by Vivianna Torun Bülow-Hübe, No. 206, post-1945 maker's mark, signed 'TORUN', stamped 925S, inner diameter 6.8 cm, total weight of item 57.4 grams. **£200-400**

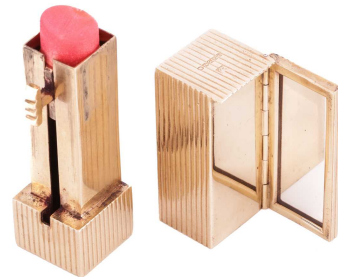


Fine Jewellery, Watches & Silver, 18th Apr, 2024 09:30

- 144 Georg Jensen - an 'Infinity' link necklace, comprising a series of curving links in the form of the infinity symbol, completed with a discreet toggle clasp, designed by Regitze Overgaard, No. 452, post-1945 maker's mark, stamped 925S, overall length 44.5 cm, 60.1 grams. **£400-600**



- 145 Kurt Weiss - a lipstick holder with mirror in 9ct yellow gold, of reeded rectangular prism form, the case slides open with a grooved thumbpiece, and a flipped open hinged mirror compartment, struck with London assay marks 1948, and Kurt Weiss maker's mark, overall measures 5.2 x 1.8 cm, total weight of item 50.3 grams. **£800-1,200**



- 146 An Imperial Russian cigarette case, by Gabriel Nykänen (Gabriel Niukkanen) 1885-1904, of rectangular form with rounded corners and bands of horizontal reeding, thumbpiece set with an oval sapphire cabochon, struck to the interiors and thumbpiece, 56 zolotnik (Russian gold standard for 14ct), assay master's mark 'AP' for Alexander Vasilyevich Romanov, and workmaster's mark 'GN' for Gabriel Nykänen, 9.3 x 6.4 x 1.5 cm, total weight 112.9 grams. Gabriel Nykänen was a workmaster for House of Fabergé during 1889-1917 **£3,500-4,500**



- 147 A Mont Blanc ballpoint pen and three pairs of Mont Blanc cufflinks; the Mont Blanc Meisterstück ballpoint pen with a boxed fine mystery black ballpoint pen refill, the cufflinks comprising a pair of pen nib cufflinks, a pair of circular cufflinks and a pair of cabochon glass cufflinks with Mont Blanc logo, all signed Mont Blanc. (4) **£250-350**



- 148 An 18ct gold Rolex Cellini ladies wristwatch, featuring a champagne face with gilded hands, set in a yellow metal case stamped '18K' and leading to a yellow metal strap, of woven design, stamped '18K'; with a hand-wound mechanical movement, model number: 40818, serial number: 4303400, 1976; 54.4 grams **£1,500-2,000**



Fine Jewellery, Watches & Silver, 18th Apr, 2024 09:30

- 149 A Chronographe Genève 18ct gold watch

Serial: 54 48
Year: Circa 1950's
Case Material: 18ct gold
Case diameter: 37mm
Dial: Gold
Numerals: Arabic
Movement: Manual
Functions: Chronograph
Strap: Brown leather
Buckle: Pin
Box: No
Papers: No **£700-900**



- 150 A Dunamis Spartan Diamond PVD wristwatch.

Serial: D0010
Case Material: Steel PVD
Case diameter: 50mm
Dial: Suspended diamonds
Numerals: Arabic diamond set
Movement: Automatic
Strap: Black leather
Buckle: Folding
Box: No
Papers: No **£800-1,200**



- 151 An 18ct gold Hugeunin Lady's dress watch, featuring a mechanical movement in a yellow metal case measuring 17mm with a silver dial and cross-over lugs all on a black strap with pin buckle. **£200-300**



- 152 A Rolex Datejust grey dial 36mm bi-metal watch, Ref: 16013

Model: 16013
Serial: R330696
Year: 1988
Case Material: Steel - Gold Bezel
Case diameter: 36mm
Dial: Grey
Numerals: Diamond dot
Movement: Automatic
Calibre: 3035
Functions: Date
Strap: Jubilee
Buckle: Folding clasp
Length of bracelet: 17cm
Box: No
Papers: No **£2,500-3,500**



Fine Jewellery, Watches & Silver, 18th Apr, 2024 09:30

- 153 A Jacob & Co Five Time Zone Diamond Set Watch.

Model:

Serial: S6620

Case Material: Steel

Case diameter: 47mm

Dial: Black Diamond set

Numerals: Diamond set Arabic numerals

Functions: Five-time zones, date

Strap: Rubber

Buckle: Folding

Box: No

Papers: No **£500-700**



- 154 A 1950s Breitling watch, featuring a Swiss-made hand-wound movement in a steel case measuring 30mm with a black dial covered with acrylic glass on a steel articulated third-party strap.

Serial: 666 **£400-600**



- 155 A ladies Jaeger LeCoultre dress watch, with a manual mechanical movement, featuring a cream face in a 9ct yellow gold 19mm case, leading to a later added rolled gold fancy link bracelet strap, with deployment clasp, model number: 7140; 14.7 grams **£300-500**



- 156 An unworn Omega De Ville 18ct gold dress watch

Model: 4610.30.02

Serial: 59730647

Year: 2008 Approx

Case Material: 18ct gold

Case diameter: 34.4mm

Dial: Cream

Numerals: Arabic

Movement: Quartz

Calibre: 1532

Functions: Date

Strap: Brown leather

Buckle: Pin

Box: Yes

Papers: Yes un-opened

Engraved case back **£800-1,200**



Fine Jewellery, Watches & Silver, 18th Apr, 2024 09:30

- 157 A 1937 Longines rectangle mechanical dress watch
Model: 2577
Serial: 5680530
Year: 1937
Case Material: Steel
Case diameter: 20mm
Dial: White
Numerals: Arabic
Movement: Mechanical
Functions: Seconds Sub-dial
Strap: Brown leather
Buckle: Pin **£500-700**
- 158 A Tiffany & Co Atlas ladies' quartz wristwatch; featuring a 29mm pink dial with Roman numeral batons and a datebox, in a stainless steel case, leading to a steel bracelet with a double deployment clasp, with makers marks, in a branded pouch and box; 59.1 grams **£500-700**
- 159 An 18ct gold ladies cocktail wristwatch, by Paul Franz, with a manual mechanical movement, in a yellow metal rectangular case, leading to a hinged textured bangle-style strap, stamped '750', model number: 8537, serial number: 214451; 12.5 grams **£300-500**
- 160 A Breitling Chronomat 808 Venus 175 black dial 1960's
Model: 808 - 217012
Serial: 1074937
Year: 1960's
Case Material: Steel
Case diameter: 37.5mm
Dial: Black
Numerals: Arabic
Movement: Manual
Functions: Chronograph, Telemetre
Strap: Vintage rally steel strap
Buckle: Folding **£2,000-2,500**



Fine Jewellery, Watches & Silver, 18th Apr, 2024 09:30

- 161 A Chopard Happy Sport Stainless Steel Wristwatch
 Model: 8347
 Serial: 28/8964-23 1173242
 Year: 2000s
 Case Material: Stainless Steel
 Case diameter: 38mm
 Dial: White, Featuring Portrait of Former President of Gabon, Omar Bongo Ondimba(1935-2009)
 Numerals: Roman
 Movement: Quartz
 Functions: Date Aperture
 Strap: Chopard Black Crocodile
 Buckle: Chopard Clasp
 Box & Papers: No
 Estimated Carat Weight: 0.4ct
 Consigned by a member of the family.
 Omar Bongo Ondimba (1935-2009) was the second president of Gabon and was in office for almost 42 years, from 1967 until his death in 2009.
 One of the wealthiest heads of state in the world, Bongo commissioned a number of wristwatches featuring his portrait by the likes of Cartier, Hublot, Piaget, Van Cleef and Arpels and Chopard among luxury brands. **£500-700**



- 162 A 9ct yellow gold ladies' dress watch by Marvin, with a manual automatic movement, featuring a gold face in a square 17mm case, to a woven bracelet strap with a folding clasp, hallmarked 9ct gold, London, 1979; 34.9 grams **£400-600**



- 163 A Rolex Precision gold wristwatch and 9ct gold strap
 Serial: 07491
 Year: 1959
 Case Material: 9ct gold
 Case diameter: 34mm
 Dial: Silver
 Numerals: Baton
 Movement: Manual
 Strap: 9ct gold third party
 Buckle: Folding
 Box: Yes
 Papers: Yes **£500-700**



Fine Jewellery, Watches & Silver, 18th Apr, 2024 09:30

- 164 A Chopard Happy Sport Oval Stainless Steel Wristwatch
 Model: 8937
 Serial: 27/8937-23 1144583
 Year: 2000s
 Case Material: Stainless Steel
 Case diameter: 30mm
 Dial: White, Featuring Portrait of Former President of Gabon, Omar Bongo Ondimba(1935-2009)
 Numerals: Roman
 Movement: Quartz
 Functions: Date Aperture
 Strap: Chopard Blue Crocodile
 Buckle: Chopard Clasp
 Box & Papers: No
 Estimated Carat Weight: 0.22ct
 Consigned by a member of the family.
 Omar Bongo Ondimba (1935-2009) was the second president of Gabon and was in office for almost 42 years, from 1967 until his death in 2009.
 One of the wealthiest heads of state in the world, Bongo commissioned a number of wristwatches featuring his portrait by the likes of Cartier, Hublot, Piaget, Van Cleef and Arpels and Chopard among luxury brands. **£500-700**



- 165 A Romain Jerome Titanic DNA Chronograph Rusted Steel T-Oxy 3 Steel/Titanium with Rusted Steel Bezel watch ref: CH.T.OXY3.11BB.00.BB
 Model: CH.T.OXY3.11BB.00.BB
 Serial: 105736
 Limited: 177/2012
 Case Material: Steel/Titanium
 Case diameter: 50mm
 Dial: Black, integrated Coal dust from the Titanic.
 Numerals: Roman
 Movement: Automatic
 Calibre: 21-RJ-21
 Functions: Chronograph, date.
 Strap: Rubber
 Buckle: Double folding
 Box: No
 Papers: No **£1,500-2,000**



- 166 An 18ct gold watch, by Baume & Mercier. With box and paperwork
 Serial: 2318954
 Year: 1997 Approx
 Case Material: 18ct gold
 Case diameter: 32mm
 Dial: White
 Numerals: Roman
 Movement: Quartz
 Functions: Date
 Strap: Black leather
 Buckle: Pin
 Box: Yes
 Papers: Yes **£300-500**



Fine Jewellery, Watches & Silver, 18th Apr, 2024 09:30

- 167 A Longines Hour Angle Lindbergh Ref: 989.5215
Model: 989.5215
Serial: 24725028
Year: 1993
Case Material: Steel
Case diameter: 38mm
Dial: Blue and silver
Numerals: Roman
Movement: Automatic
Functions: Latitude marking bezel
Strap: Black leather
Buckle: Pin
Box: Yes
Papers: Yes
The Longines Lindbergh Hour Angle commemorates the historic Lindbergh flight.
The original watch was designed by Col. Charles A. Lindbergh as a navigational aid for pilots. Used in conjunction with a sextant, a nautical almanac and a radio set for receiving the time signal, it made possible the rapid determination of the Greenwich hour angle, i.e., longitude. **£2,000-3,000**



- 168 A Baume & Mercier Linea 5161 lady's dress watch.
Model: 5161
Serial: 2273883C
Case Material: Steel
Case diameter: 30mm
Dial: Blue
Numerals: Arabic
Movement: Quartz
Strap: Steel
Buckle: Folding
Box: Yes
Papers: Yes **£200-300**



- 169 A Bulova Accutron Astronaut watch
Model: M4
Serial: 1-223140
Year: Circa 1960's
Case Material: Steel
Case diameter: 38mm
Dial: Black
Numerals: Baton
Movement: Tuning Fork
Calibre: 214
Functions: GMT
Strap: Black leather
Buckle: Pin
Box: Yes **£800-1,200**



Fine Jewellery, Watches & Silver, 18th Apr, 2024 09:30

- 170 A pendant watch with a tiger's eye dial, circa 1970, of oval form approximately measuring 25.0 x 22.0 mm, suspended from an integral fancy link chain, formed of spiral links flanked by tiger's eye round beads with capped ends, completed with a spring-ring clasp, signed 'Universal Geneve', yellow metal stamped '18k', overall length 76.0 cm, total weight of item 56.9 grams.
£2,000-3,000



- 171 An Alain Philippe 18ct White Gold Gentleman's Wristwatch
Serial: 10040.52-017
Year: 2000s
Case Material: 18ct White Gold, Diamond Inset Bezel
Case diameter: 37mm
Dial: Mother of Pearl Featuring Portrait of Former President of Gabon, Omar Bongo Ondimba(1935-2009)
Numerals: Diamond Set and Arabic
Movement: Quartz
Functions: Second Subdial
Strap: Black Alligator
Buckle: Diamond Inset 18k White Gold
Box & Papers: No
Gross Weight: 104.58g
Consigned by a member of the family.
Omar Bongo Ondimba (1935-2009) was the second president of Gabon and was in office for almost 42 years, from 1967 until his death in 2009.
One of the wealthiest heads of state in the world, Bongo commissioned a number of wristwatches featuring his portrait by the likes of Cartier, Hublot, Piaget, Van Cleef and Arpels and Chopard among luxury brands. **£1,500-2,500**



- 172 A Tag Heuer 2000 Series Professional 200 Meters
Model: CK1110-0
Serial: AB6253
Year: 2001
Case Material: Steel
Case diameter: 38mm
Dial: Black
Numerals: Arabic/Baton
Movement: Quartz
Functions: Date
Strap: Steel
Buckle: Folding
Box: Yes
Papers: Yes **£400-600**



Fine Jewellery, Watches & Silver, 18th Apr, 2024 09:30

- 173 A Rolex Cellini 18ct gold wristwatch

Model: 4233

Serial: D795842

Year: 2005 or 2006

Case Material: 18ct gold

Case diameter: 33mm

Dial: Black

Numerals: Arabic

Movement: Hand-wound

Calibre: 1602

Strap: Black Leather Rolex

Buckle: Original pin

Box: Yes

Papers: No - Wallet Included **£2,000-3,000**



- 174 A Girard-Perregaux mechanical dress watch.

Model: 6994

Case Material: Steel

Case diameter: 38mm

Dial: Off-White

Numerals: Arabic

Movement: Manual

Functions: Seconds Subdial

Strap: Brown leather

Buckle: Pin

Box: No

Papers: No **£300-500**



- 175 A circa 1925 platinum dress watch with sapphires and diamonds, featuring a Swiss Made Ethic W. C hand-wound movement in a white metal case stamped '14K & Plat' and measuring 21mm with a white dial and 8-cut diamonds set into the case with calibrated sapphires channel set to the lugs all on an intricate pierced out articulated bracelet with hidden clasp. Total weight of item: 22.32g **£600-800**



- 176 A Must De Cartier Tank Vermeil Lady's Watch

Model: 2415

Serial: 162742PL

Case Material: Silver Gilt

Case diameter: 22mm

Dial: Silver

Numerals: Roman

Movement: Quartz

Strap: Green

Buckle: Folding **£600-800**



Fine Jewellery, Watches & Silver, 18th Apr, 2024 09:30

- 177 A Jacob & Co limited edition world GMT watch

Limited: 0013/1800

Case Material: Steel

Case diameter: 47mm

Dial: Grey

Numerals: Roman

Movement: Automatic

Functions: World GMT, date.

Strap: Brown rubber/leather

Buckle: Folding

Box: No

Papers: No **£1,500-2,000**



- 178 An early twentieth-century 9ct gold half-hunter pocketwatch, by Waltham, featuring a cream face with black Roman numerals on the outer case and watch face, hallmarked 9ct gold; together with a 9ct gold Albert curb link watch chain featuring a 9ct gold equine fob with a bloodstone seal and a 9ct gold Masonic ballot orb cross pendant; 134.1 grams **£1,200-1,800**



- 179 An Apollo XI 25-year Anniversary Limited edition Omega

Speedmaster Moon Watch. No: 582/2500

Model: 3891.50.00

Serial: 48301281

Year: 1994

Case Material: Steel

Case diameter: 42mm

Dial: Black

Numerals: Baton

Movement: Manual

Functions: Chronograph

Strap: Leather

Buckle: Pin with additional Folding clasp

Box: Yes

Papers: Yes **£3,000-5,000**



Fine Jewellery, Watches & Silver, 18th Apr, 2024 09:30

- 180 A Chopard Happy Sport Stainless Steel Wristwatch
 Model: 8347
 Serial: 28/8967-23 1132949
 Year: 2000s
 Case Material: Stainless Steel, Inset Diamond Bezel
 Case diameter: 38mm
 Dial: White, Featuring Portrait of Former President of Gabon, Omar Bongo Ondimba(1935-2009)
 Numerals: Roman
 Movement: Quartz
 Functions: Date Aperture
 Strap: Stainless Steel
 Buckle: Folding Clasp
 Box & Papers: No
 Approximate Carat Weight: 3.5ct
 Consigned by a member of the family.
 Omar Bongo Ondimba (1935-2009) was the second president of Gabon and was in office for almost 42 years, from 1967 until his death in 2009.
 One of the wealthiest heads of state in the world, Bongo commissioned a number of wristwatches featuring his portrait by the likes of Cartier, Hublot, Piaget, Van Cleef and Arpels and Chopard among luxury brands. **£1,000-1,500**



- 181 A Cartier Two Row Panthere Watch reference 1120
 Model: 1120
 Serial: 643537UF
 Case Material: Steel and gold bezel
 Case diameter: 21mm
 Dial: Cream
 Numerals: Roman
 Movement: Quartz
 Strap: Bi-metal
 Buckle: Folding
 Length of bracelet: 15.5cm
 Box: Yes
 Papers: No **£1,800-2,200**



- 182 A Zlatousovskits Asova Ministry of Defence Russian diving watch, with a case cage, features an automatic movement in a steel case measuring 58mm with a black dial and removable protection grill with canvas strap. **£400-600**



Fine Jewellery, Watches & Silver, 18th Apr, 2024 09:30

183 A Rolex Datejust 26mm diamond dot dial.

Model: 6917

Serial: 7627174

Year: 1983

Case Material: 18ct gold

Case diameter: 26mm

Dial: Black

Numerals: Diamond Dot

Movement: Automatic

Calibre: 2030

Functions: Date

Strap: Jubilee

Buckle: Folding

Length of bracelet: 14cm

Box: Yes

Papers: No **£3,500-5,500**



184 An (IAF) Iraqi Airforce issued Breitling Navitimer automatic reference: 1806 gentleman's wristwatch

Model: Navitimer 1806

Serial: 1448369

Year: 1970 (Approximation)

Case Material: Stainless steel

Caseback: Bearing insignia of the Iraqi Airforce in addition to serial number and Breitling stamp internally

Case diameter: 48mm

Dial: Stamped with Iraqi wings in place of Breitling wings, black with silvered subdials, having silvered outer bi-directional rotating logarithmic navigation computer, pointers at 3 o'clock, 9 o'clock and 12 o'clock

Numerals: luminescent batons on main dial with Arabic numerals on additional apertures

Movement: Automatic

Calibre: 12 micro rotor

Functions: Date aperture, rotating bezel, bi-directional rotating logarithmic navigation computer, chronograph function

Strap: Stainless steel

Buckle: Deployant clasp stamped Breitling Geneve

Acquired during military service assisting the UK government's inquiry into the suspected proliferation of WMD's in Iraq during the Gulf War. **£3,000-4,000**



Fine Jewellery, Watches & Silver, 18th Apr, 2024 09:30

- 185 A Chopard Happy Sport Stainless Steel Wristwatch
 Model: 8347
 Serial: 28/8964-23 1173226
 Year: 2000s
 Case Material: Stainless Steel
 Case diameter: 38mm
 Dial: White, Featuring Portrait of Former President of Gabon, Omar Bongo Ondimba(1935-2009)
 Numerals: Roman
 Movement: Quartz
 Functions: Date Aperture
 Strap: Chopard Blue Crocodile
 Buckle: Chopard Clasp
 Box & Papers: No
 Estimated Carat Weight: 0.4ct
 Consigned by a member of the family.
 Omar Bongo Ondimba (1935-2009) was the second president of Gabon and was in office for almost 42 years, from 1967 until his death in 2009.
 One of the wealthiest heads of state in the world, Bongo commissioned a number of wristwatches featuring his portrait by the likes of Cartier, Hublot, Piaget, Van Cleef and Arpels and Chopard among luxury brands. **£500-700**



- 186 A Baume & Mercier Linea chronograph 65701 lady's dress watch.
 Model: 65701
 Serial: 5396731
 Case Material: Steel
 Case diameter: 32mm
 Dial: Mother of pearl
 Numerals: Baton
 Functions: Chronograph, date.
 Movement: Quartz
 Strap: Steel
 Buckle: Folding
 Box: Yes
 Papers: Yes
 Leather strap included **£200-300**



- 187 A Hermès K37 Captain Nemo quartz watch
 Model: K37
 Serial: 261640
 Case Material: Steel/Gold bezel
 Case diameter: 32mm
 Dial: White
 Numerals: Roman
 Movement: Quartz
 Functions: Date
 Strap: Black leather
 Buckle: Pin
 Length of bracelet:
 Box: No
 Papers: No **£200-300**



Fine Jewellery, Watches & Silver, 18th Apr, 2024 09:30

- 188 A Longines hourglass mechanical watch in 14kt gold
 Model: 2038-2
 Serial: 9771901
 Year: 1955
 Case Material: 14kt gold
 Case diameter: 21mm
 Dial: Silver
 Numerals: Diamon dot/baton
 Movement: Mechanical
 Strap: Black leather
 Buckle: Pin
 Box: No
 Papers: No
 Service: No **£300-500**



- 189 Patek Philippe - An astonishing Patek Philippe diamond set belt style dress watch in 18ct gold from 1940, featuring a Swiss-made mechanical movement in a yellow metal case stamped '750' and measuring 20.50mm. The opening dial cover is set with diamonds and hinges up to reveal the time with an integrated woven gold metal bracelet and folding clasp.
 No: 835123
 Case No: 628673
 Year: 1940 **£8,000-12,000**



- 190 A Zenith 18ct gold wristwatch, featuring a hand-wound Swiss-made movement in a yellow metal case stamped '750' and measuring 33mm with a silver dial covered with acrylic glass all on an integrated woven white and yellow gold bracelet.
 Serial: 5252804
 Total weight of item: 71.18g **£2,000-3,000**



- 191 A 1940 IWC Schaffhausen (International Watch Company) 14ct gold watch, featuring a black dial.
 Serial: 1014840
 Movement number: 986475
 Year: 1940
 Case Material: 14kt gold
 Case diameter: 26mm
 Dial: Black
 Numerals: Roman
 Movement: Handwound
 Strap: Generic black
 Buckle: Generic pin buckle **£400-600**



Fine Jewellery, Watches & Silver, 18th Apr, 2024 09:30

- 192 A Rolex lady's dress watch circa 1920 in 9ct yellow gold, featuring a Swiss-made hand-wound signed movement in a 9ct gold case measuring 21mm with a white unsigned dial all on a black leather strap.
Movement signed Rolex Prima
Case engraved Rolex 7 World's Record's
17618125649 **£400-600**



- 193 A Longines Conquest Automatic watch Ref: L3.657.4
Model: L3.657.4
Serial: 34135973
Case Material: Steel/Ceramic Bezel
Case diameter: 41mm
Dial: Black
Numerals: Arabic
Movement: Automatic
Calibre: 2824
Functions: Date
Strap: Steel/Ceramic
Buckle: Folding
Box: No - Travel case
Papers: No **£300-400**



- 194 An Omega open-face pocket watch and chain, featuring a keyless wound movement in a silver case measuring 50mm with a cream dial and seconds sub-dial on a short Albert chain in silver.
Serial: 7386086
Year: 1930 **£200-300**



- 195 A 9ct gold half-hunter pocket watch featuring a keyless wound Swiss movement in a yellow gold case measuring 50mm, a white enamel dial, and an engraved inner case back. Total weight of items: 93.74g **£400-600**



Fine Jewellery, Watches & Silver, 18th Apr, 2024 09:30

- 196 An early twentieth-century open-face pocket watch, with a gold face in a yellow metal embossed case measuring approximately 38mm, stamped '14K', together with an Albert curb link watch chain marked '9ct' and a pocketwatch winding key; 62.6 grams **£500-700**



- 197 A 9ct gold Waltham open-face pocket watch and a 9ct gold Albert chain. Featuring a keyless wound movement in a 9ct yellow gold case measuring 49mm with a white enamel dial and seconds subdial on a flat curb link double Albert chain with a T-bar. Total weight of items: 109.62g Serial: 21476789 **£1,000-1,500**



- 198 Two open-faced pocket watches, comprising a 9ct gold pocket watch featuring a gold face in an engraved 33mm case, hallmarked 9ct gold, together with a pocket watch featuring a white face in an engraved 34mm yellow metal case stamped '14K'; 60.7 grams **£500-700**



- 199 An enamel and rose-cut diamond full hunter pocket watch, with a keyless wound movement in a yellow case stamped '750' and measuring 25mm, with a white enamel dial with Roman Arabic numerals. The blue enamel case with a floral scene with swallows, and a rose-cut diamond panel. With an un-associated fancy link chain, stamped 375 at the base of the lobster clasp. Total weight of items 36g (2). **£800-1,200**



- 200 A silver pocket watch by Omega and a Goliath Emanuel Southampton pocket watch. Featuring an Omega open-face pocket watch and chain, with a keyless wound movement in a continental silver case measuring 48mm with a white enamel dial all on a silver Albert chain with a T-bar. A Goliath Emanuel open-face pocket watch in a steel case measuring 67mm with a white enamel dial. (2) **£200-300**



Fine Jewellery, Watches & Silver, 18th Apr, 2024 09:30

- 201 Le Roy - A remarkably early quarter repeater by Le Roy Au Palais Royal No 88 A Paris - No 3009 (Le Roy Et Fills) Circa 1798 - 1809. Possibly a Large "Empire" pocket watch in gold. The 18ct gold case measures 55.5mm with a white enamel dial featuring a sunburst engine-turned case front with a blank shield. Total weight of item: 116.7g
Engagement - (Quarter repeater on two stamps by pressure on the pendant) **£1,000-1,500**



- 202 An 18ct yellow gold open-faced pocket watch, featuring a gold face with scrolling and foliate detailing, in an engine-turned case, measuring approximately 41mm, 43.9 grams **£300-400**



- 203 A silver mounted five-piece dressing table in a fitted case, by W G Sothers Ltd of Birmingham 1926, each with a vacant circular cartouche on an engine-turned hexagonal pattern, comprising a hand mirror, two hair brushes and two clothes brushes, together with a comb by D C Bs of London 1959; in a Kendal & Dent fitted box with pad. **£150-200**



- 204 A George III silver matched three-piece tea service, London 1803; comprising a teapot by John Emes, of elliptical form with hinged domed cover, wood finial and angular handle, with a reeded border to shoulder above an armorial engraving, 28.0 cm long; together with a twin-handled sugar bowl and creamer by James Barratt, of similar reeded design, gilt interior; Total weight of items 31.19 ozt. (3) **£400-600**



- 205 A George III silver coffee pot by William Cripps, London 1776, of pear form, decorated with elaborate floral repoussé work, with a domed cover and flame finial, gargoyle mask spout and supported on four paw feet, handle removed, 18.0 cm high, 15.85 ozt. **£200-300**



Fine Jewellery, Watches & Silver, 18th Apr, 2024 09:30

- 206 A mixed collection of silver flatware; including
6 fish forks and 6 fish knives in rattail pattern by Brook & Son
of Edinburgh 1923;
6 Hanoverian table forks;
6 Hanoverian dessert forks;
6 Old English dessert spoons;
4 mismatched Old English serving spoons;
12 stainless steel knives;
Total weighable 58.58ozt. **£700-900**



- 207 A cased set of six Garrard limited edition commemorative
goblets; made to celebrate the silver wedding of the late
Queen and The Duke of Edinburgh. Commemorative
engraving to the bowls, knopped stems and vine cast borders.
In original case and numbered 676 - 681 consecutively.
London 1973 by Garrard & Co Ltd. 15cm high overall. 37ozt
£800-1,200



- 208 A white metal jug possibly Bolivian of baluster form with a
tapered loop handle and flared foot, 23 cm high, 36.9 ozt. **£300-400**



- 209 A George IV silver canteen of Old English thread flatware, by
James & Walter Marshall, Edinburgh 1826; comprising 12
serving spoons, 12 table spoons, 12 table forks, 12 dessert
spoons and 12 dessert folks; together with another 12
matching filled table knives and 12 dessert knives by C J
Vander Ltd, Sheffield 1987; total weighable 109ozt.
Accompanied with the original receipt from antique silver
dealer William Walter. **£2,500-3,500**



Fine Jewellery, Watches & Silver, 18th Apr, 2024 09:30

- 210 An American part canteen of flatware by Lunt, William and Mary pattern with monograms engraved to terminals; Comprising:-
eleven table forks,
five tablespoons,
eight dessert spoons,
eight cake forks,
eight sorbet spoons,
eight teaspoons,
eight butter knives,
six various serving pieces,
eight table knives with stainless steel blades,
a two piece carving set with stainless steel blades
Two graduated cake slices with stainless steel blades
Circa 1921, stamped 'Treasure Sterling Patent 1921'. In a fitted case.
70.5ozt weighable. **£400-600**



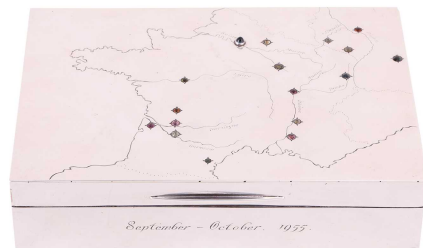
- 211 A three-piece silver tea set, oval with husk borders and leaf-capped scroll handles, on oval skirt feet; The teapot with wooden scroll handle and knob finial, Birmingham 1926 by William Neale and Sons; Together with two silver napkin rings, a silver mounted glass sugar caster and a pair of silver plated sugar tongs. Gross weight weighable 28.9ozt **£300-400**



- 212 A set of French flatware, including eleven table forks, twelve tablespoons and twelve knives, with nineteenth-century continental patterned handles, in white metal stamped with French hallmarks; total weighable: 70.8 ozt **£700-900**



- 213 A mid 20th century silver and gem-set cigarette box; engraved with a depiction of the Western European Grand Tour route, with significant destinations marked with inset precious and semi-precious stones and Paris with an applied cabochon sapphire. Engraved to the centre 'September-October 1955'. Cedar lined. London 1955 by Padgett & Braham Ltd. 16.5 x 10.5 x 4cm. **£200-300**



Fine Jewellery, Watches & Silver, 18th Apr, 2024 09:30

- 214 A George III silver sugar castor of ogee baluster form, London 1764 by Robert Peaston, with high domed cover and spreading foot, 13 cm overall height, together with a silver caddy spoon, teaspoon and two similar oval silver table salts. 6.5 oz combined weight of weighable silver. **£200-300**



- 215 An Art Deco tea service, comprising a teapot, coffee pot, tea caddy and milk jug, each piece of angular form with a panelled body, angular handle and octagonal-shaped spread foot, with ivory insulators on the teapot and coffee pot, in white metal marked '800'; 47.2 oz. Ivory certification reference A613E29X **£400-600**



- 216 A four-piece silver tea service, by William Suckling Ltd, Sheffield 1946, comprising a teapot, hot water jug, a twin-handled sugar bowl and creamer, all of angular form with gadrooned borders, supported on a spread foot, fitted with bakelite handles and finials; hot water jug 19.0 cm high, teapot 15.0 cm high; total weight of items 55.15 oz. (4) **£600-800**



- 217 A collection of silver flatware comprising a set of eleven two-pronged table forks and four two-pronged dessert forks with crested Old English pattern handles, hallmarked London, 1901; 32.5 oz **£200-300**



Fine Jewellery, Watches & Silver, 18th Apr, 2024 09:30

- 218 A large Newbridge Silverware canteen of 'Celtic' pattern flatware, in a simulated mahogany four-drawer case for twelve place settings; comprising:

11 dinner forks
12 salad forks
12 pastry forks
12 dinner knives
12 salad knives
4 serving spoons
12 tablespoons
12 soup spoons
12 dessert spoons
12 teaspoons
12 fish knives
12 fish forks
2 cake servers
2 butter knives
2 cheese knives
1 bar knife
1 carving knife
1 carving fork
1 sharpener

Total weighable (excluding items with filled handles):

171.43ozt.

one dinner fork missing **£2,000-3,000**



- 220 A 19th-century Ottoman gilded ceremonial belt; the woven mesh belt with a filigree buckle, Ottoman marks to the five fastening apertures, to the belt and fittings, 95cm length, 12.2 ozt. **£300-500**



- 221 A cased set of late Victorian fruit servers, comprising a knife and fork, and a pair of grape scissors; the handles cast and chased with trailing grapevines. London 1860 by Francis Higgins. In fitted case. **£200-300**

